

Cabinet

12 September 2019

A46 Strategic Link Road

Recommendations

That Cabinet:

1. Approve the development of the A46 Strategic Link Road scheme, working in partnership with Coventry City Council and Warwick District Council, and authorise the Strategic Directors for Communities and Resources to take all necessary steps to prepare the scheme for implementation including:
 - (i) undertaking public consultation;
 - (ii) completing detailed feasibility design and determining land requirements;
 - (iii) negotiating terms for any necessary land acquisitions, alterations to private accesses and any 3rd party agreements required for the scheme;
 - (iv) preparing applications for planning permission and any other statutory consents;
 - (v) determining the procurement strategy; and
 - (vi) preparing and submitting applications for funding, or support Coventry City Council in preparing and submitting applications for funding.

2. Request that further reports be brought to Cabinet and then to Council once the detailed feasibility stage is complete, to confirm the development of the scheme to detailed design, to consider the inclusion of the A46 Strategic Link Road project into the Capital Programme, to invite tenders, to award a contract and to complete the required land acquisition.

1.0 Background

- 1.1 In December 2016 Cabinet approved the development of the A46 Link Road scheme, working in partnership with Warwick District Council and Coventry City Council, and authorised the Strategic Directors for Communities and

Resources to take all necessary steps to prepare the scheme for implementation.

- 1.2 The A46 Link Road scheme, at that time, was set out in three parts. This report describes the development of the A46 Link Road Phase 2 which is now referred to as the A46 Strategic Link Road.
- 1.3 The report describes the work completed to date and the proposed next steps.

2.0 Key Issues

- 2.1 The A46 Strategic Link Road has been developed to a high-level feasibility stage in accordance with the vision to support planned sub-regional housing and employment growth within Warwick District, Coventry City and the wider A46/ A45 corridor. This will ensure that local residents and businesses within Coventry and Warwickshire are able to take advantage of the economic opportunities afforded by growth and development in the sub region.
- 2.2 The A46 Stoneleigh Junction and the dependent project: the A46 Strategic Link Road, aim to achieve the following objectives:
 - To facilitate and support the housing and employment proposals contained within the Local Plans for Warwick District and Coventry City
 - To support the growth aspirations of the University of Warwick (UoW), Stoneleigh Park and other key existing and proposed employment sites within the immediate area and wider A46 corridor in the context of the adopted Local Plans,
 - To ensure the Coventry and Warwickshire area is well connected to the economic opportunities which will arise as a result of growth and development in the region including HS2 and associated growth at UK Central;
 - To provide additional resilience to the Strategic Road Network (specifically the M6, M42, A46 and A45) through the delivery of a new high quality link.
 - To help reduce congestion in the A45 corridor which will allow further housing growth to come forward in North West, West and South West Coventry and parts of Warwick District; and
 - To unlock land to help realise the opportunity for a number of strategic sustainable transport infrastructure improvements in the area, including a new railway station to serve the University of Warwick, improved access to Tile Hill station, bus priority and a network of pedestrian and cycle routes.

2.3 To date the following work has been completed in collaboration with the City Council and Warwick District Council under the Cabinet decision of 8 December 2016:

- Consultant prepared high-level feasibility design
- Establishment of WCC Project Board
- Establishment of A46 Link Road Programme Board, with representation at a senior officer level from the three authorities
- Initial engagement with potentially affected landowners
- Engagement with local resident groups and other key stakeholders
- Engagement with potential funding bodies
- An Investible Proposition application to Homes England by WMCA through Coventry City Council
- Traffic survey and transport modelling to help define the scope of the project; and
- Development and maintenance of a project communications plan.

2.4 The proposed strategic link road would see a new road constructed between Stoneleigh Junction on the A46 and Westwood Heath Road in Coventry, with a direct connection into the University of Warwick. The scheme would also include improvements to a number of local junctions within Coventry to help mitigate the predicted impacts of the scheme in that area of the city. An indicative layout for the scheme is included as Appendix A.

2.5 The link road would see a transformational change in accessibility to the University of Warwick and the surrounding business parks and other employment areas through the provision of a new road linking the A46 at Stoneleigh with Westwood Heath via the A429 Kenilworth Road (close to the trace of HS2). This infrastructure will support the University of Warwick's long-term masterplan along with wider housing and employment proposals for the area. It will also help reduce the inappropriate use of minor roads such as Crackley Lane, Red Lane and Cromwell Lane for traffic wishing to access the University and its surrounding area.

3.0 Options and Proposal

3.1 The next steps for the development of the scheme are:

- Complete traffic modelling and define scope of project including identifying the proposed junction alterations within Coventry
- Maintain communication with key stakeholders and landowners (e.g. HS2 Ltd, University of Warwick)
- Initiate discussions with Network Rail regarding the proposed crossing of the Leamington Spa to Coventry rail line
- Undertake an Equality Impact Assessment
- Prepare public consultation information

- Prepare Outline Business Case (OBC) applications for the funding bodies
- Prepare detailed feasibility design, and complete early ecological, environmental, i.e. noise, air quality, and topographical surveys; and
- Prepare a further report to Cabinet to set out progress and confirm continued development of the project.

3.2 Then, subject to successful OBC funding applications:

- Prepare the planning application, and other statutory processes
- Prepare detailed design, including consideration of and mitigation for ecological, and environmental impacts, i.e. noise, air quality
- Prepare Compulsory Purchase Orders to be brought forward in parallel with negotiated land option agreements
- Prepare Side Roads Orders
- Prepare agreements with Network Rail and other statutory bodies
- Prepare procurement package; and
- Prepare Full Business Case (FBC) applications for the funding bodies

3.3 Then, subject to successful FBC funding applications:

- Prepare Cabinet and Council reports to request entry into the Capital Programme; and
- Award main works contract.

4.0 Procurement Strategy

4.1 The A46 Strategic Link Road is a multi-agency, multi-stakeholder proposal, which requires a clear procurement strategy, recognising the collaborative relationship between the City and County Councils, and the intention to undertake works within each authority area.

4.2 Through the A46 Link Road Programme Board, a working group will be established to develop this strategy, to set out and agree the risks held by each party and to determine the most cost-effective route to procuring the works and services.

4.3 It is also proposed to establish a Project Board for the scheme including senior member representation from all three Authorities.

5.0 Financial Implications

5.1 The development of the A46 Strategic Link Road has, to date, been delivered jointly between officers from Coventry City Council, Warwick District Council and Warwickshire County Council.

- 5.2 Initial funding for the scheme development has been obtained from Department for Transport (DfT), West Midlands Combined Authority (WMCA) and the Coventry and Warwickshire Local Enterprise Partnership (C&WLEP). This funding supports the work completed to date and part of the detailed feasibility design stage, but it will not cover all the work necessary to prepare the scheme for implementation. Funding for the remainder of the detailed feasibility design, the detailed design and the construction of the scheme is still to be sought. If Cabinet authorises the preparatory work proposed in this report, it will be managed so that the County Council is not at any stage committed to expenditure exceeding that covered by secured external funding without a further report having been brought to Cabinet.
- 5.3 The funding allocated to date is held by Coventry City Council for the scheme development, and will include costs for site investigations, feasibility design, and the development of the funding applications. There is a risk that, should future approvals not be forthcoming, these costs will be abortive. However, these costs will be met by external funding already in place.
- 5.4 The proposed overall funding package for the scheme is as follows:

Funding Source	Amount (£)
<i>Scheme Development</i>	
CWLEP Growing Places/ Growth Deal (committed)	500,000
WMCA SOBC for Coventry South (committed)	200,000
DfT Large Local Major Scheme (committed)	1,250,000
<i>Design & Construction</i>	
DfT Large Local Major Scheme (to be secured)	35,000,000
Homes England Investible Proposition (application made – awaiting feedback)	35,000,000
WMCA Devolution Deal (to be secured)	35,000,000
S106 Developer Funding (to be confirmed)	Est. 10,000,000
TOTAL (subject to funding being received through all sources)	116,950,000

- 5.5 Applications for funding from external sources will be through each organisation's funding application template. There is a degree of similarity between these processes, and preparation of the project business case will follow the *DfT Transport business case: assessment and process procedures*.
- 5.6 The funding applications will be made by either Coventry City Council or by Warwickshire County Council. Where the application is made by the City Council, they will undertake the role of accountable body and will enter into a Grant Deed Agreement with Warwickshire County Council to set out the terms of funding transfer for the completed works and services. Where applications are made, both authorities will be required to confirm support of the application through endorsement by letter.

- 5.7 Initial cost estimates for the work anticipates a project cost of £70m to £100million. This estimate will be further developed and refined as part of the detailed feasibility design stage. The estimate will include an allocation for contingency and inflation and will recognise the risk of increased works costs as a result of anticipated levels of construction in the area.
- 5.8 Further reports for Cabinet and, where required, Council will be prepared on completion of the detailed feasibility design and the detailed design stages setting out the proposed funding package for the construction works, and the estimated cost of the scheme, in order to consider the continued development of the scheme and, eventually, the inclusion of the scheme in the County Council's Capital Programme.

6.0 Timescales associated with the decision and next steps

- 6.1 The current programme for the A46 Strategic Link Road is as follows:
- (i) Scheme scope defined following traffic modelling late Autumn 2019
 - (ii) Public consultation Winter 2019/2020
 - (iii) OBC Funding Applications Spring 2020
 - (iv) FBC Funding Applications Spring 2022
 - (v) Construction complete 2024/2025
- 6.2 These timescales are dependent on the successful completion of each previous stage and recognition made of dependency on processes and approvals of key stakeholders, as well as delivery of other key construction projects in the area.
- 6.3 The programme will be kept under review as the project progresses.

Appendix

Appendix - Indicative Layout for the Scheme

Background papers

None

	Name	Contact Information
Report Author	Paul Bentley	paulbentley@warwickshire.gov.uk Tel: 01926 418029
Assistant Director	Scott Tompkins	scotttompkins@warwickshire.gov.uk Tel: 01926 412422
Strategic Director	Mark Ryder	markryder@warwickshire.gov.uk Tel: 01926 412811
Portfolio Holder	Cllr Jeff Clarke (Communities) Cllr Peter Butlin (Finance and Major Projects)	

The report was circulated to the following members prior to publication:

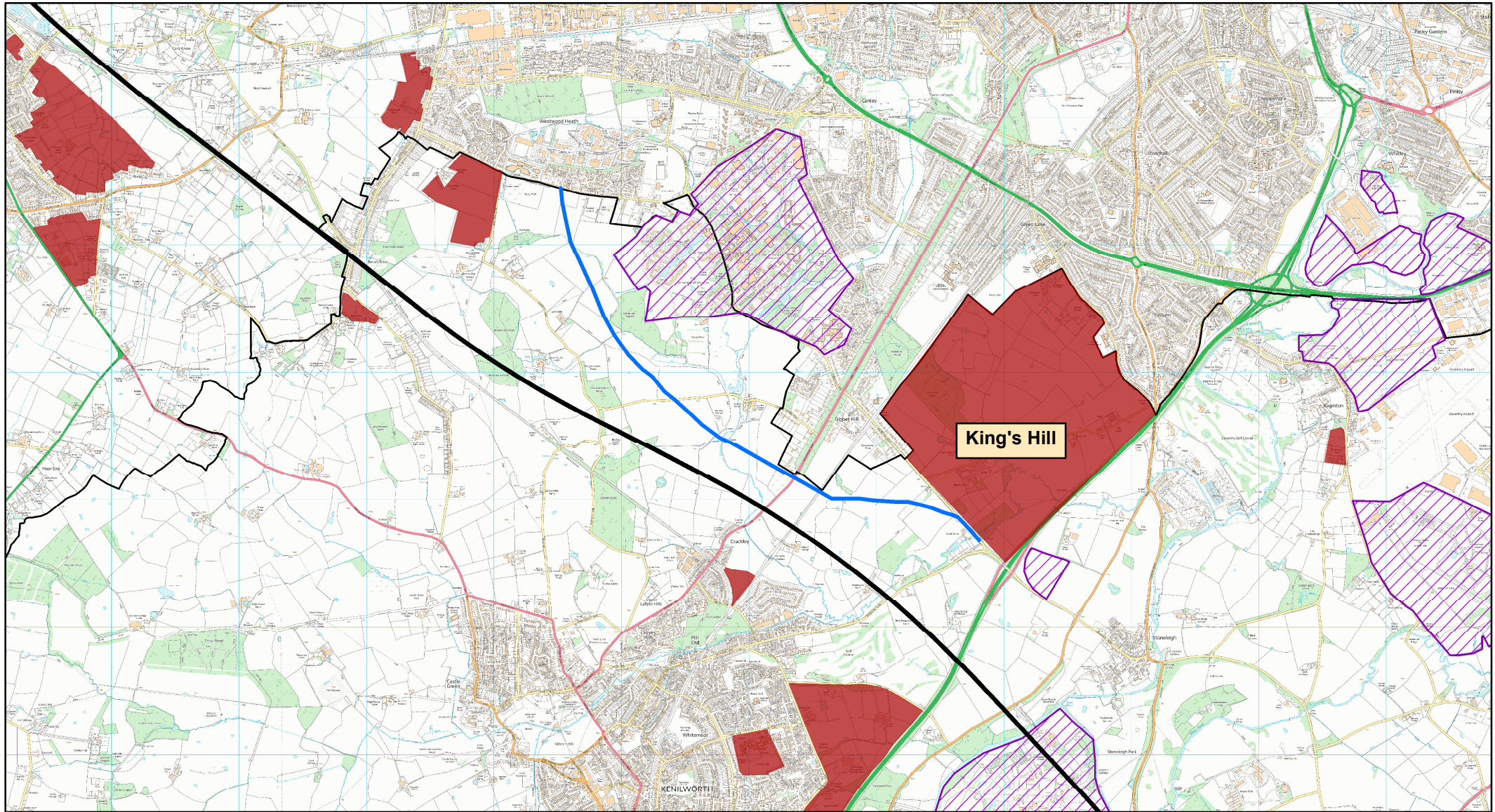
Local Members:

Councillors Redford, Shilton, Cockburn and Cooke

Other members:

Councillors Boad, Phillips, Clarke, Fradgley, O'Rourke, Butlin, Chattaway, Singh Birdi, Warwick, Roodhouse and Chilvers.

Appendix A - Indicative Strategic Link Road Layout



Legend

- Indicative Link Road Route
- Employment Growth
- Housing Allocations
- HS2 Phase 1



Communities
04 Sep 2019